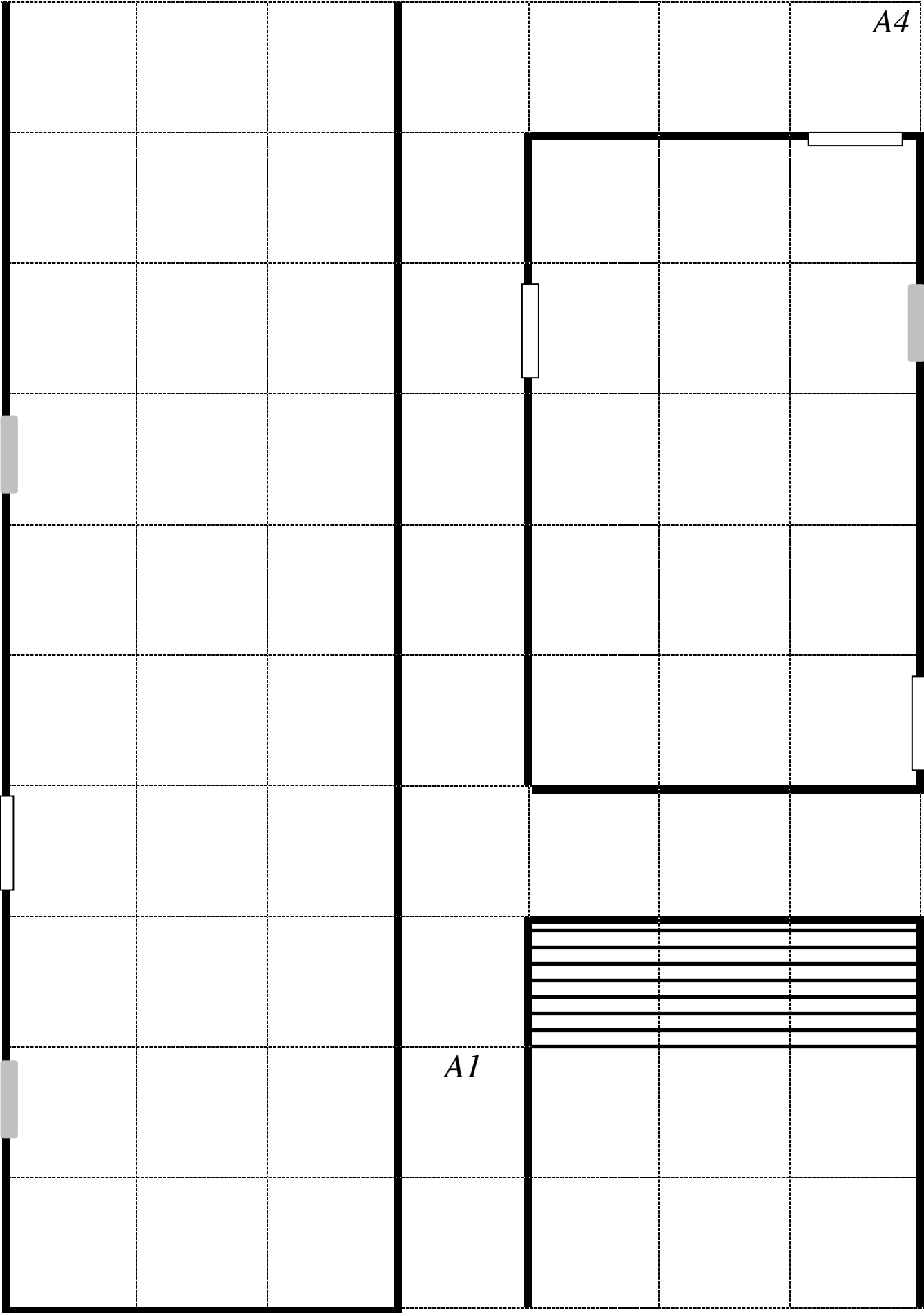


Plans à monter pour jouer :  
**Le massacre de la  
montagne Crochue**



# LA PROPRIÉTÉ DES GRAULS (RDC)

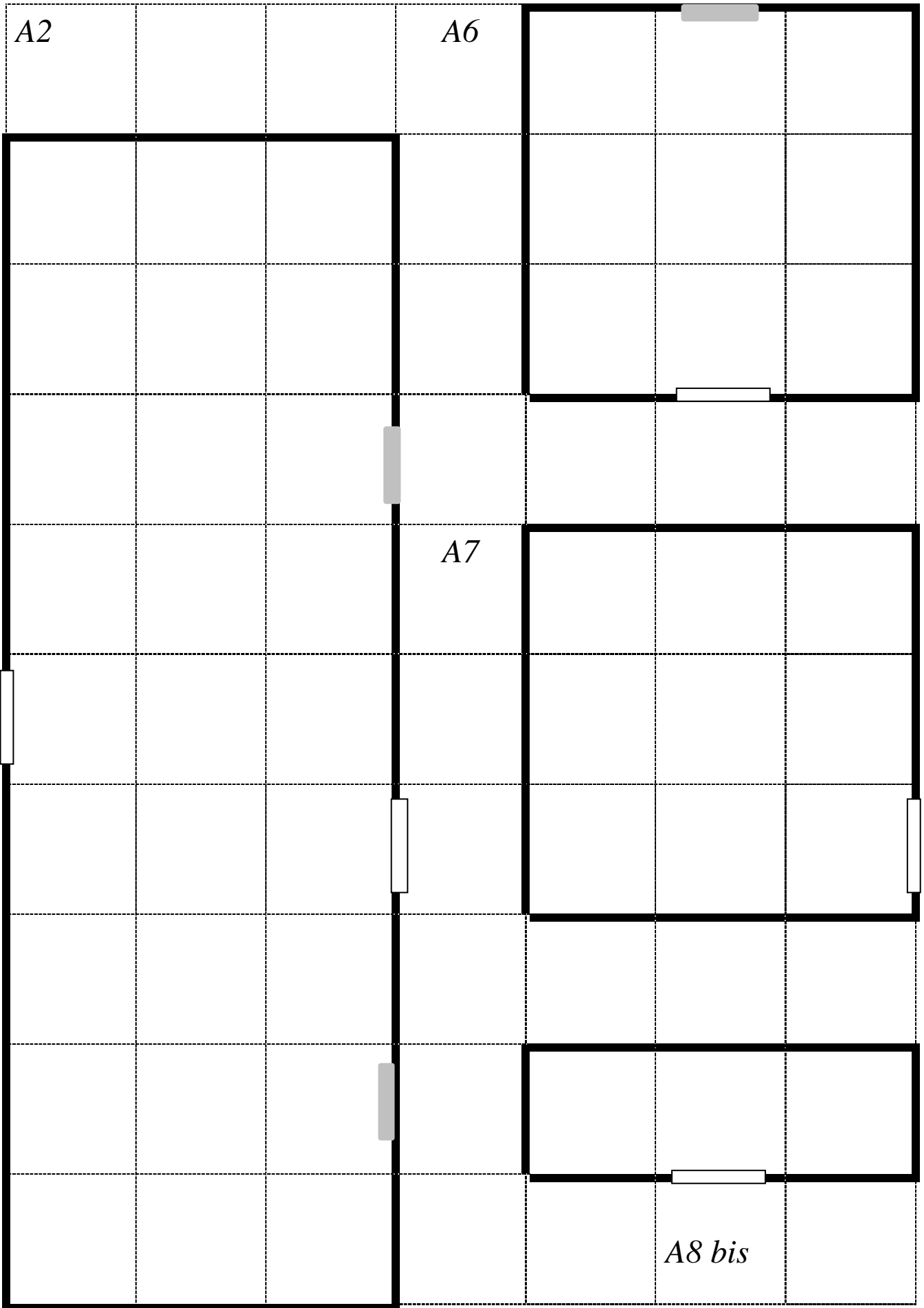


A2

A6

A7

A8 bis



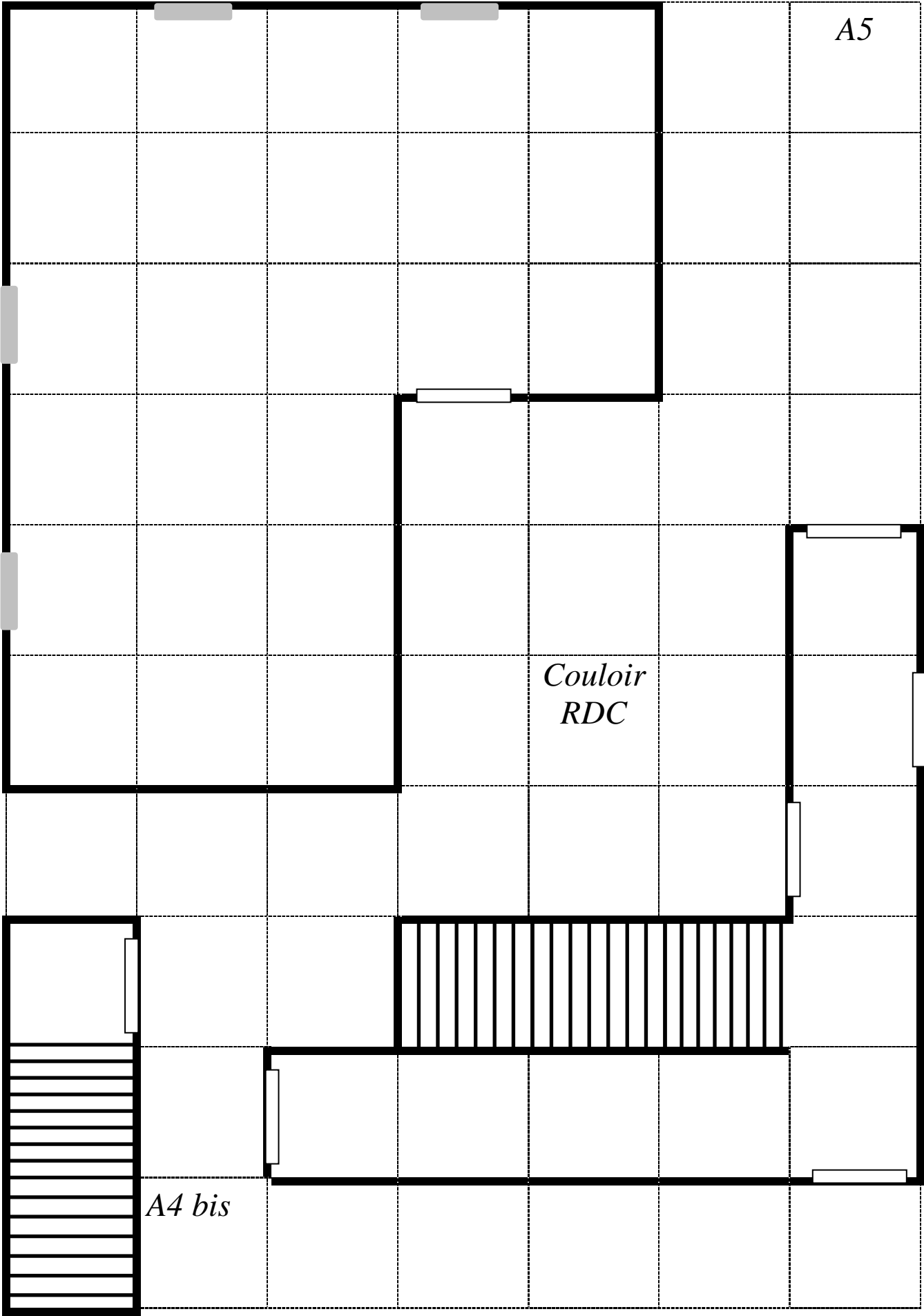
A3

A8

A5

*Couloir  
RDC*

*A4 bis*



*Etage :*

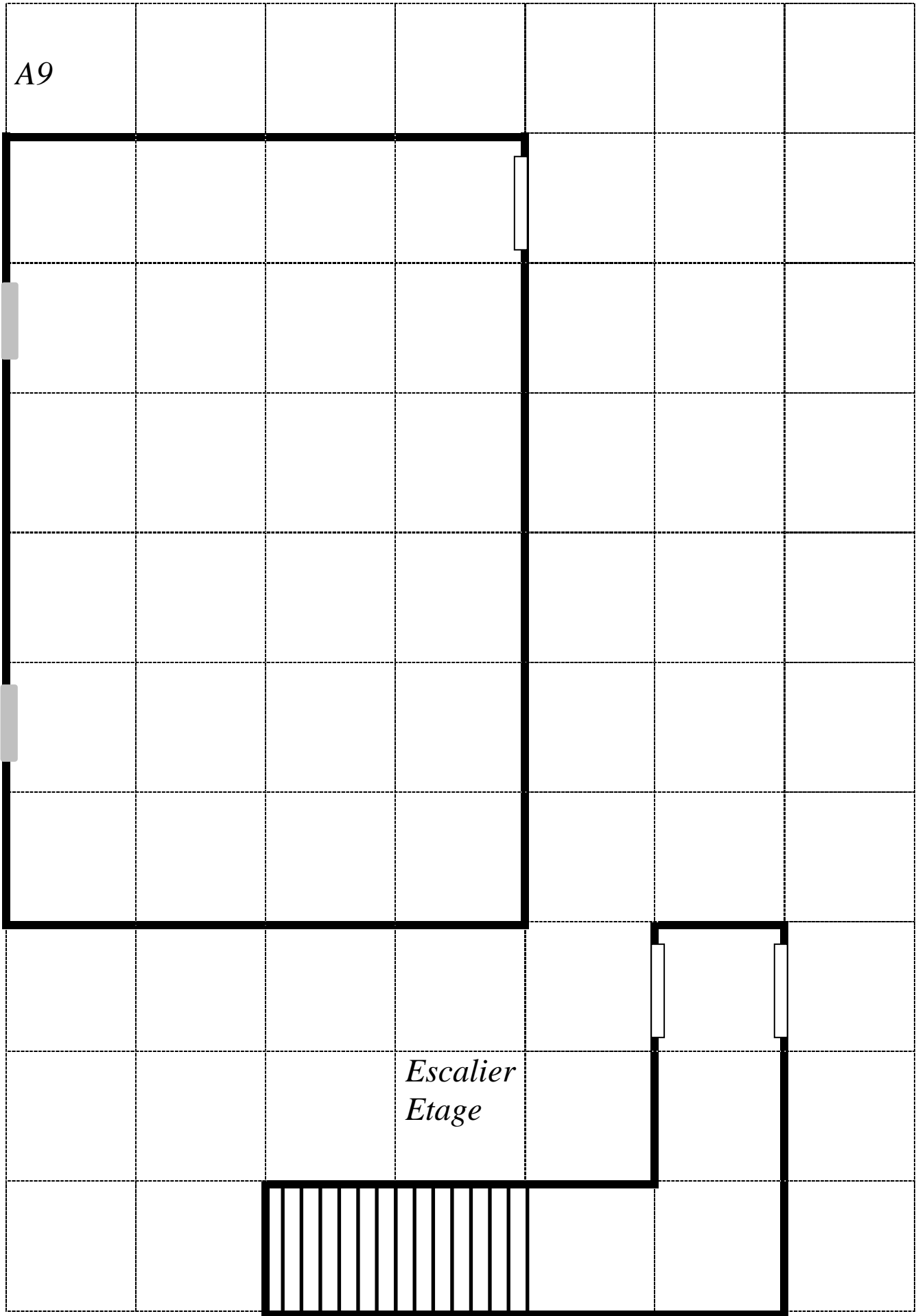
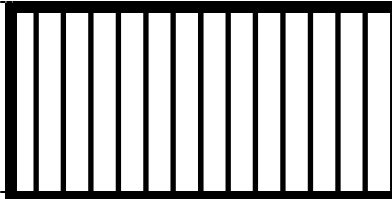
*A10 entrée*


*A10 Sud*




A9

*Escalier*  
*Etage*



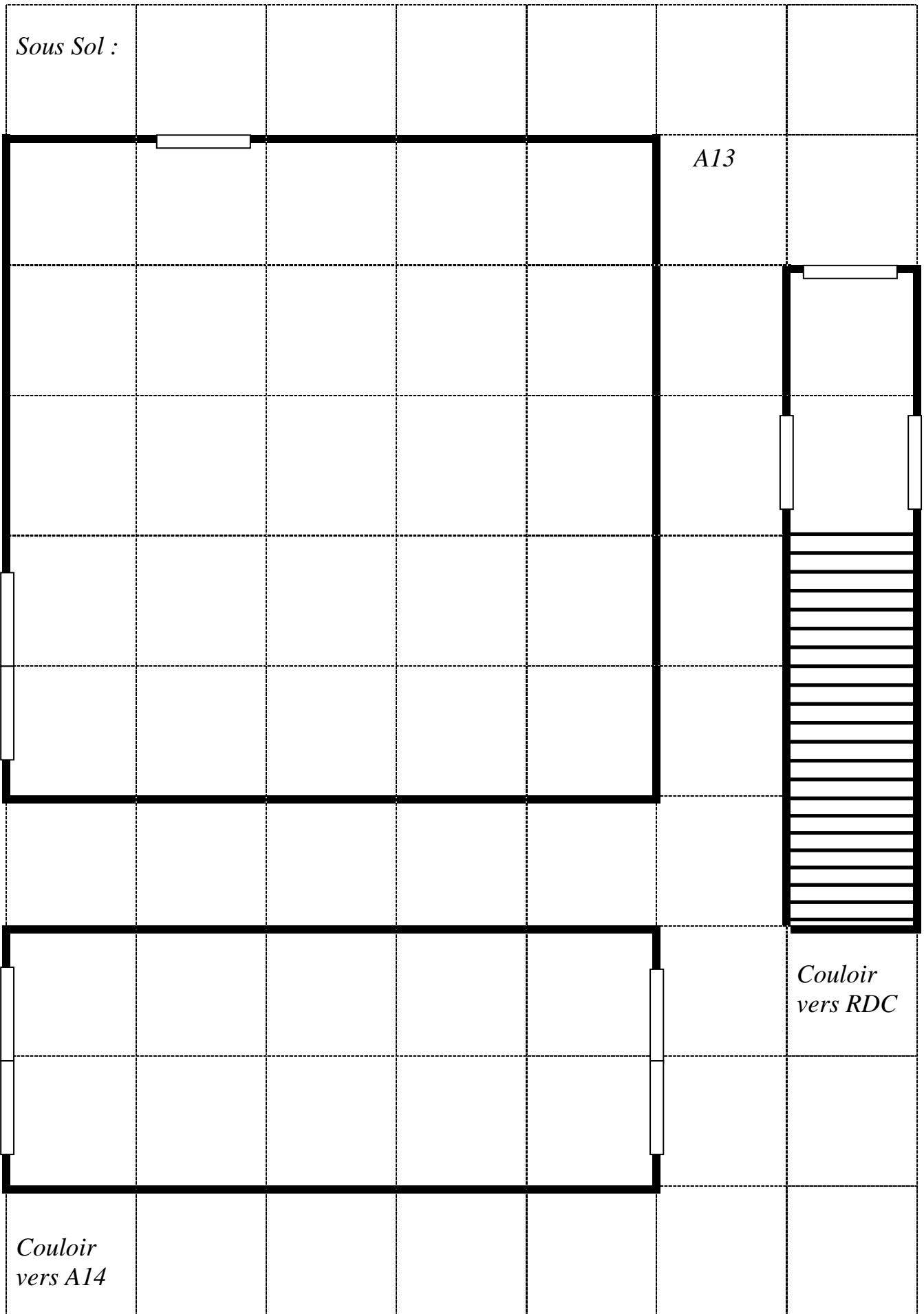


*Sous Sol :*

*A13*

*Couloir  
vers RDC*

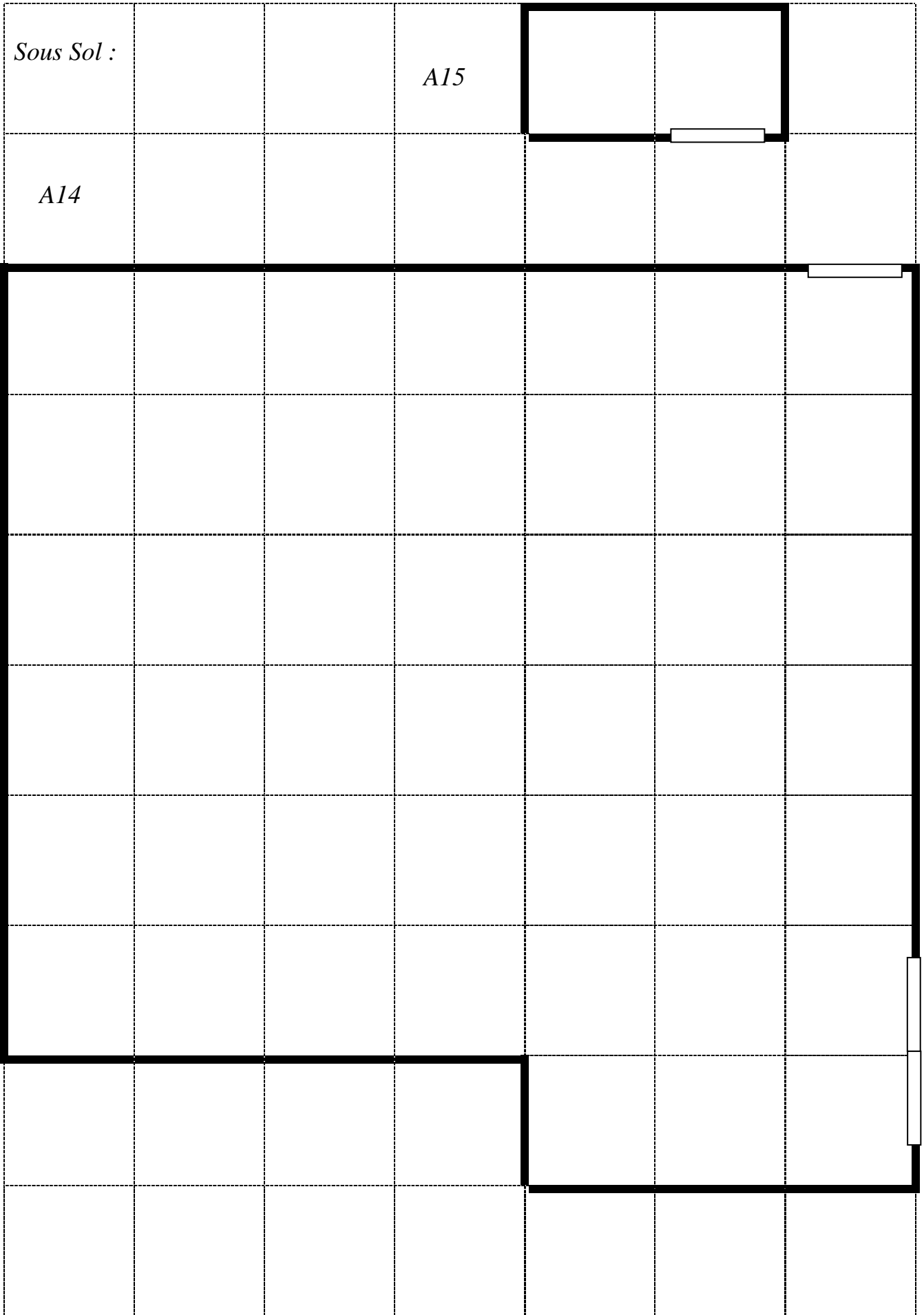
*Couloir  
vers A14*



*Sous Sol :*

*A15*

*A14*

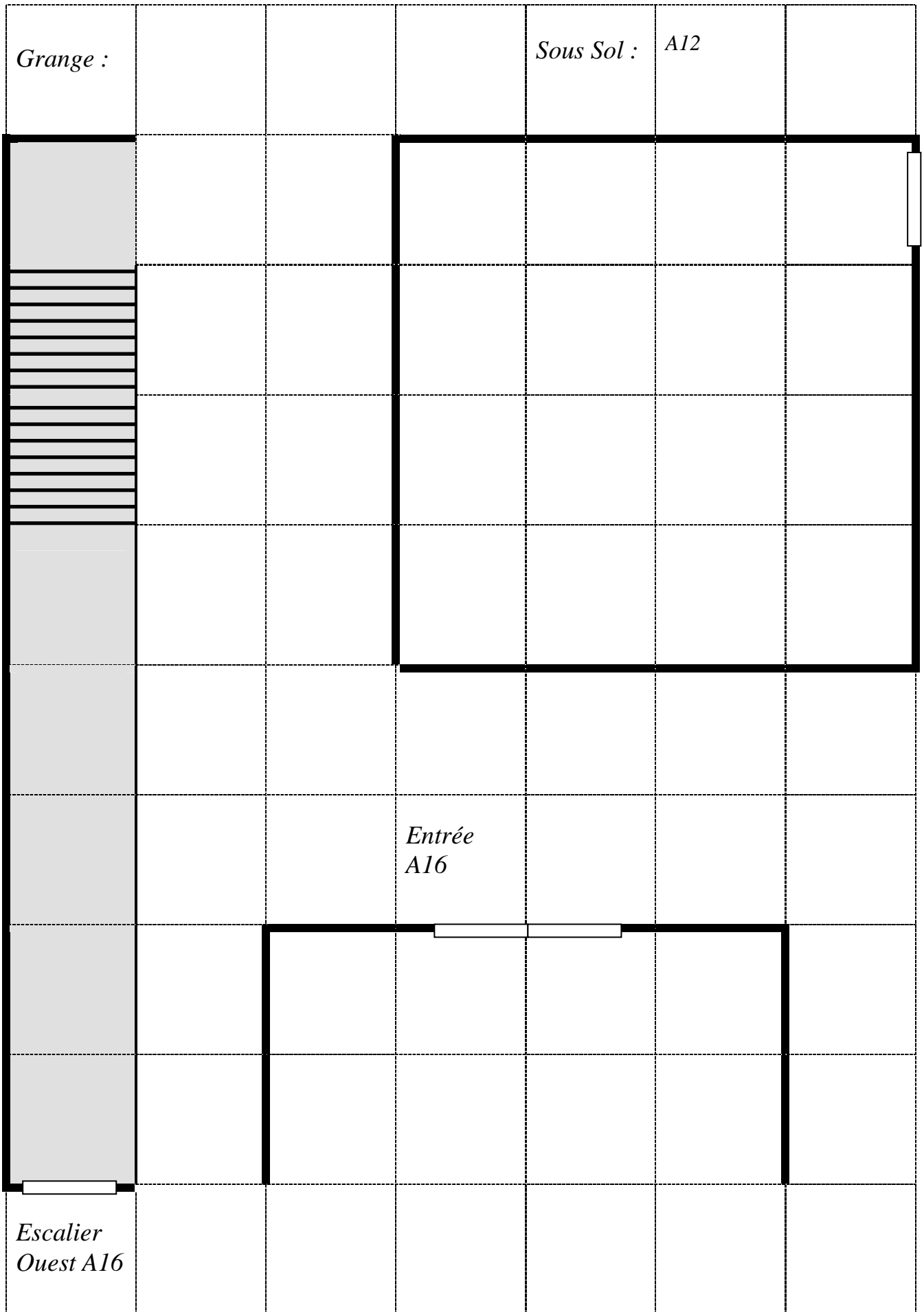


*Grange :*

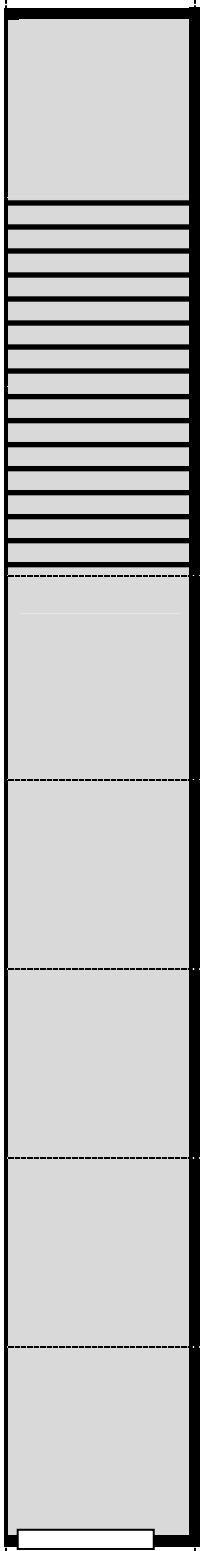
*Sous Sol : A12*

*Escalier  
Ouest A16*

*Entrée  
A16*



*Grange :*

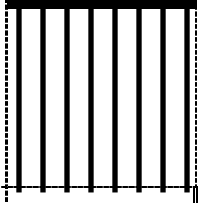
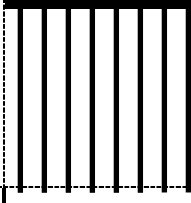


*Escalier  
Est A16*

*All sous  
sol*

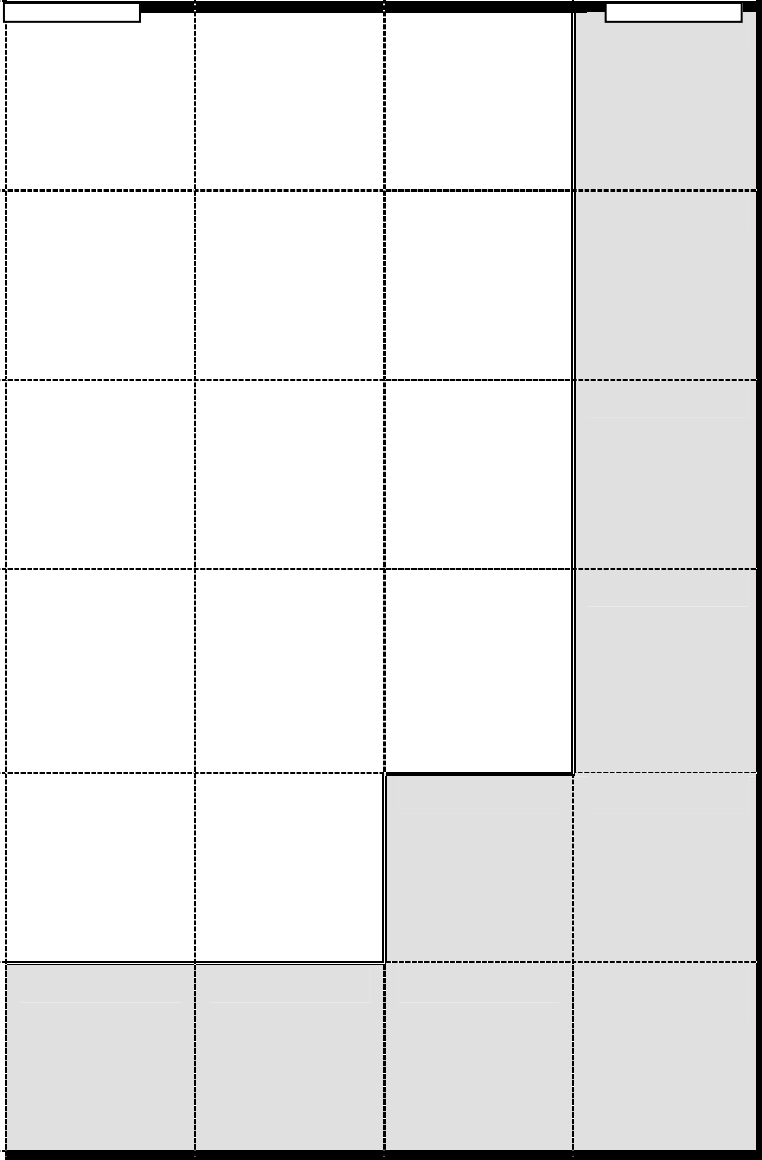
A16

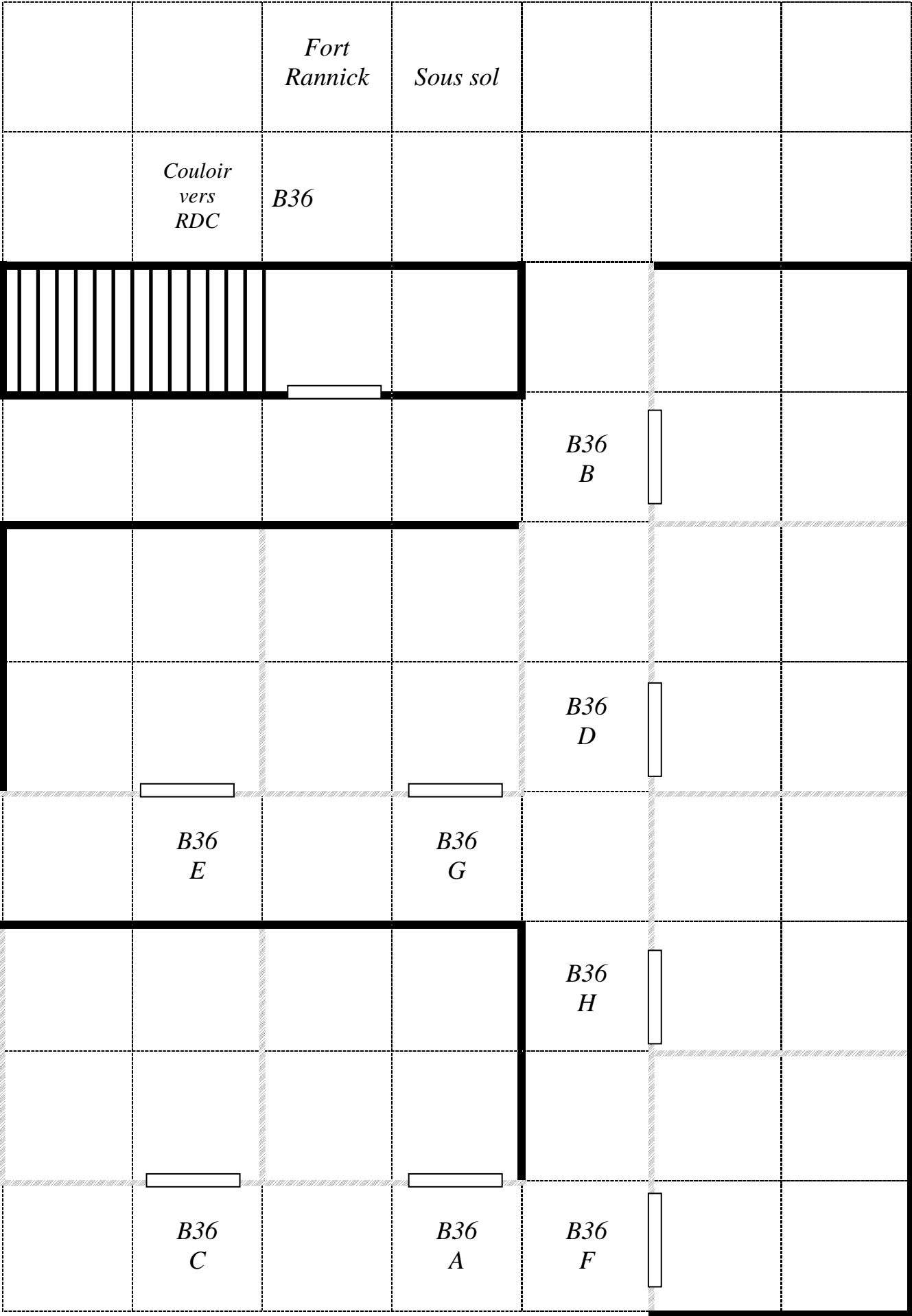
Grange :





*A17 Est*







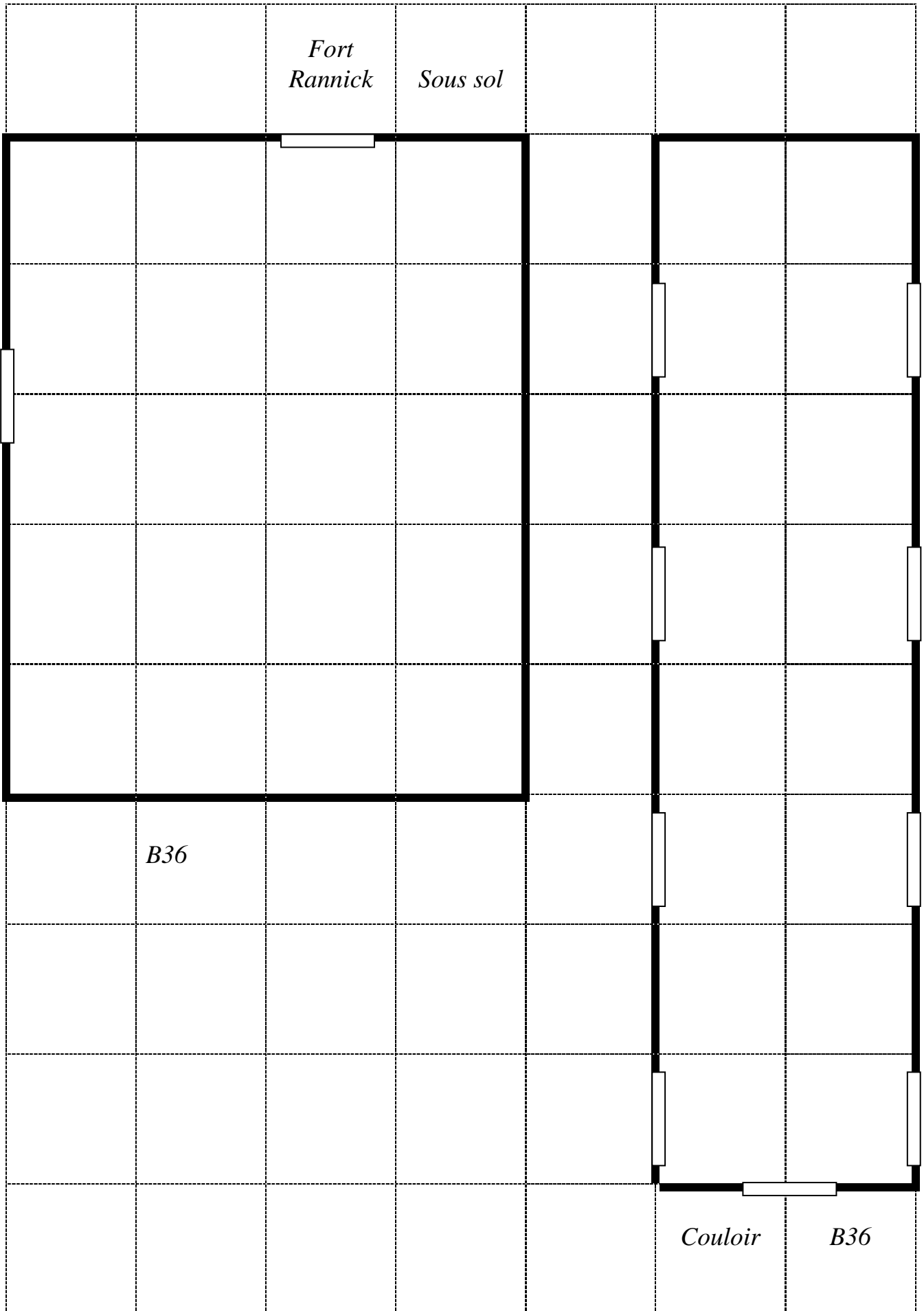
*Fort  
Rannick*

*Sous sol*

*B36*

*Couloir*

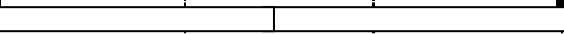
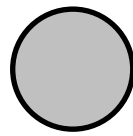
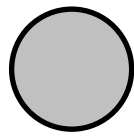
*B36*



*Fort  
Rannick  
1<sup>er</sup> étage*

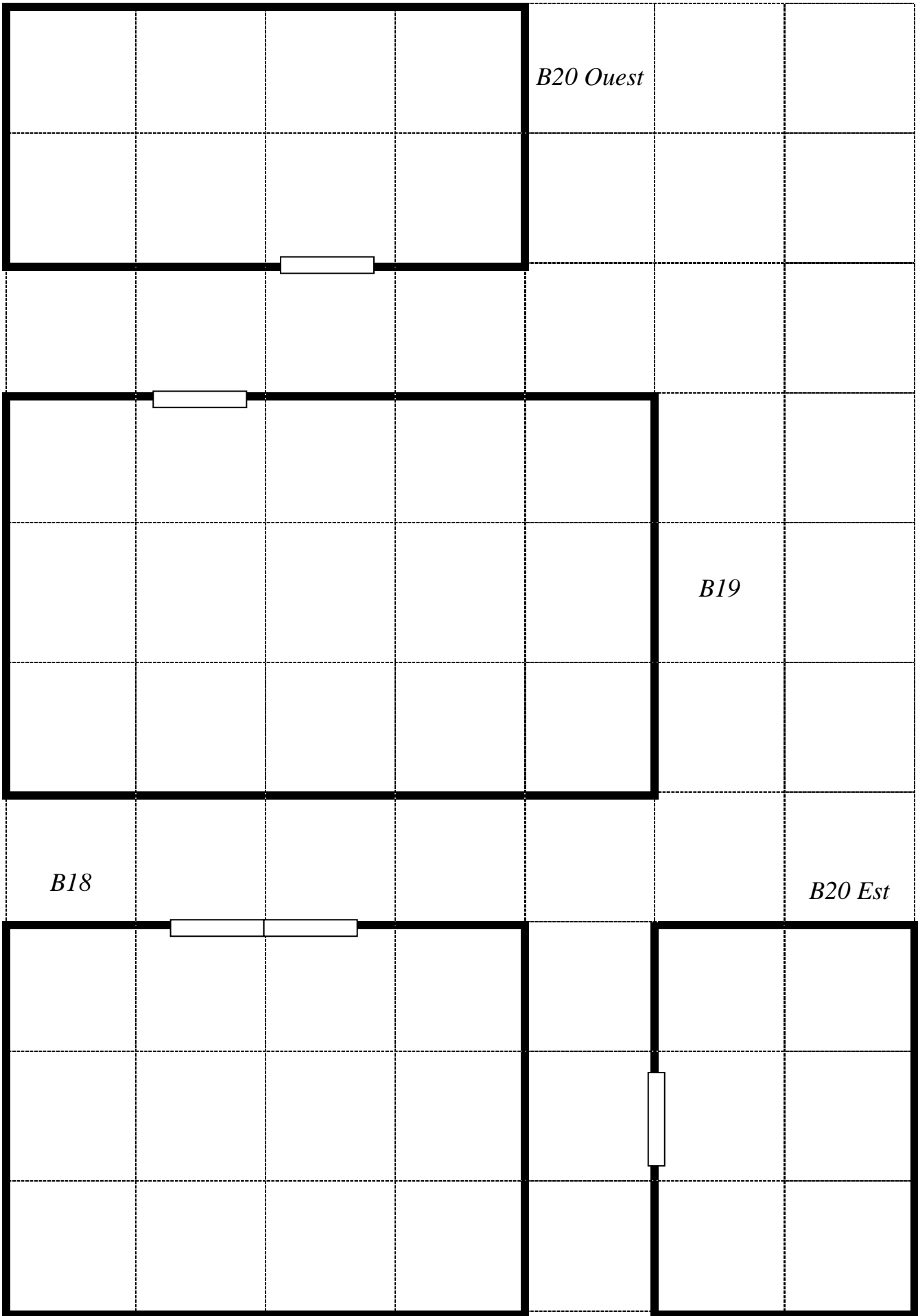
*B16*

*Entrée Fort  
RDC*



*B20 Ouest*



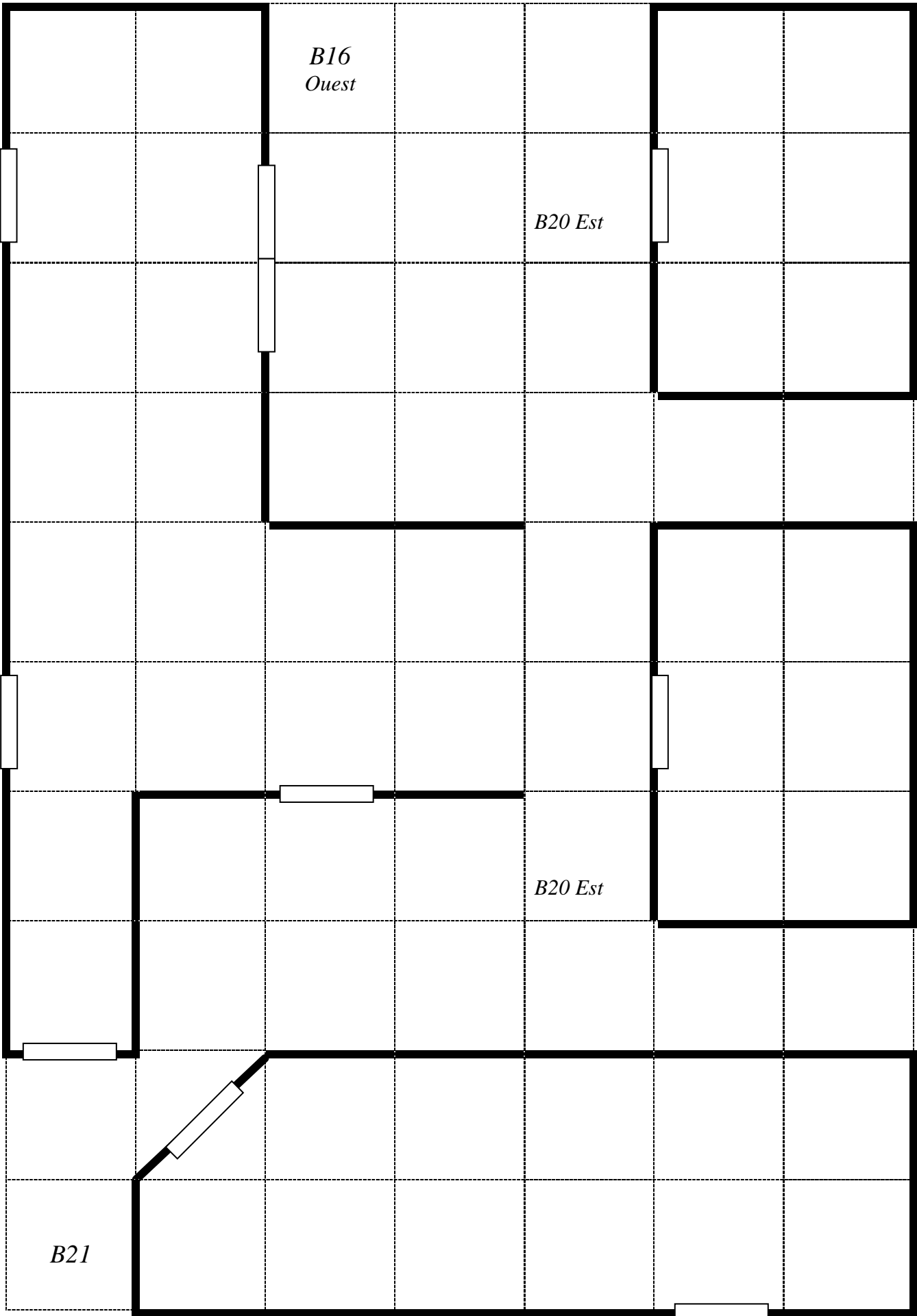


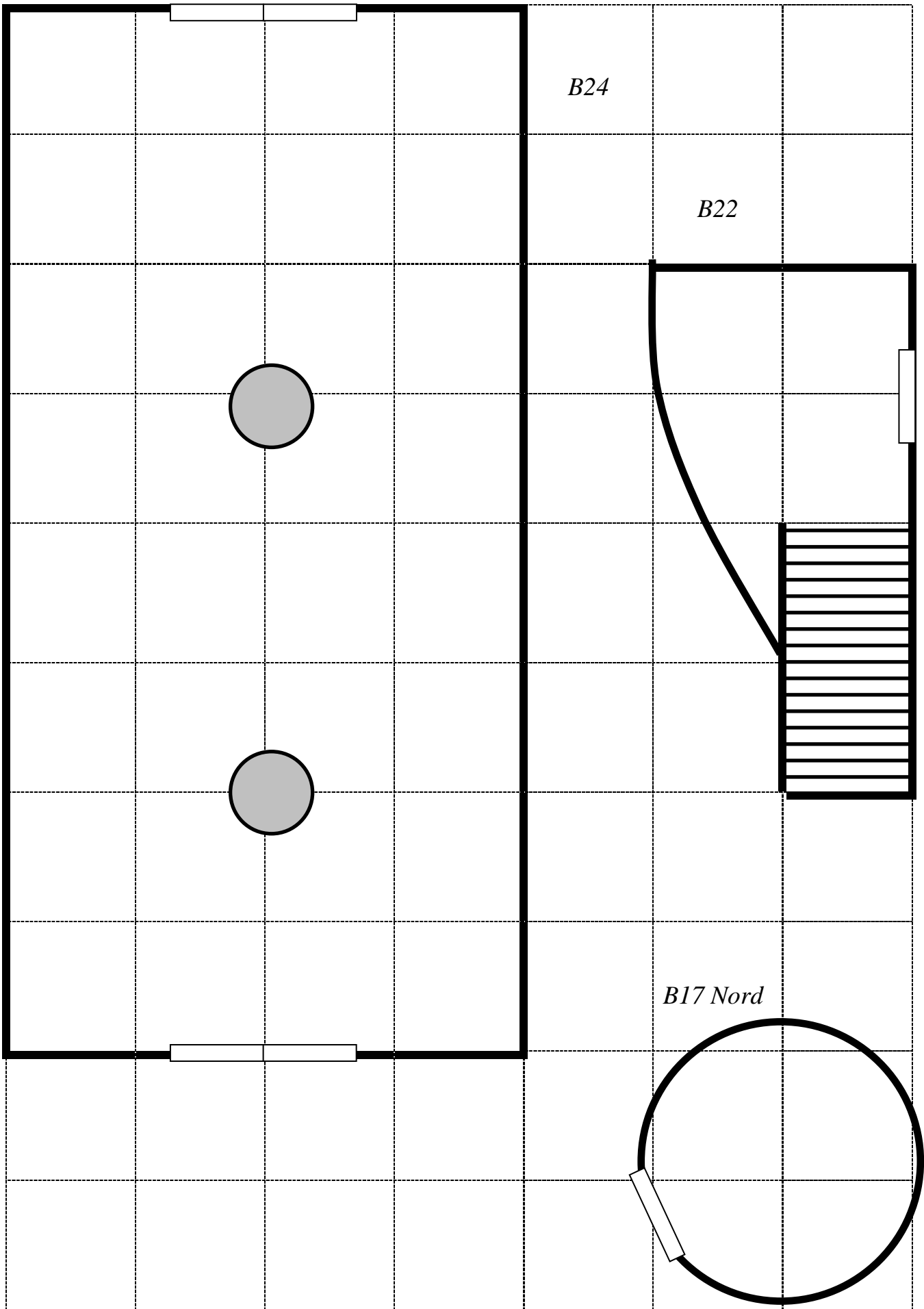
*B20 Ouest*

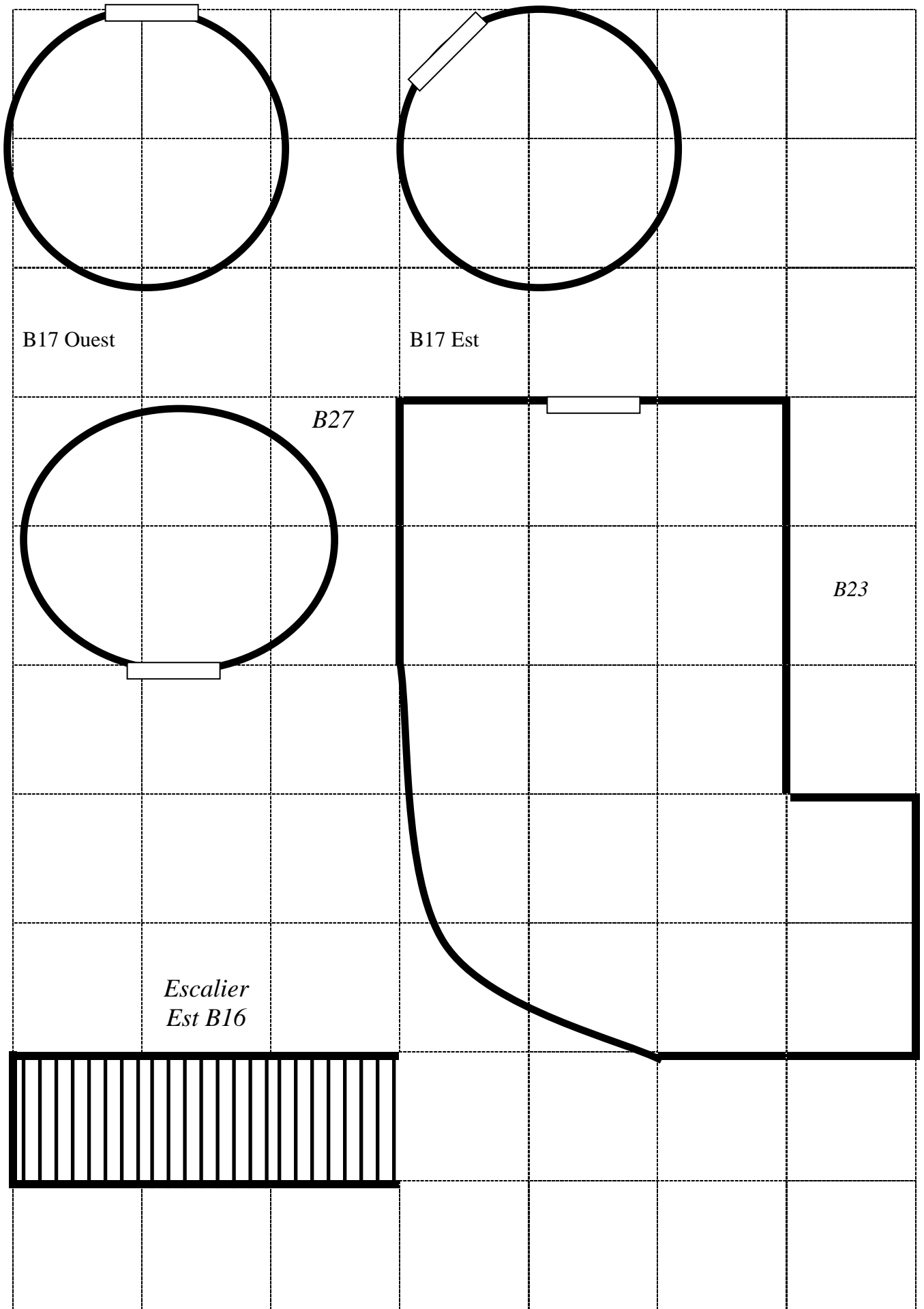
*B19*

*B18*

*B20 Est*







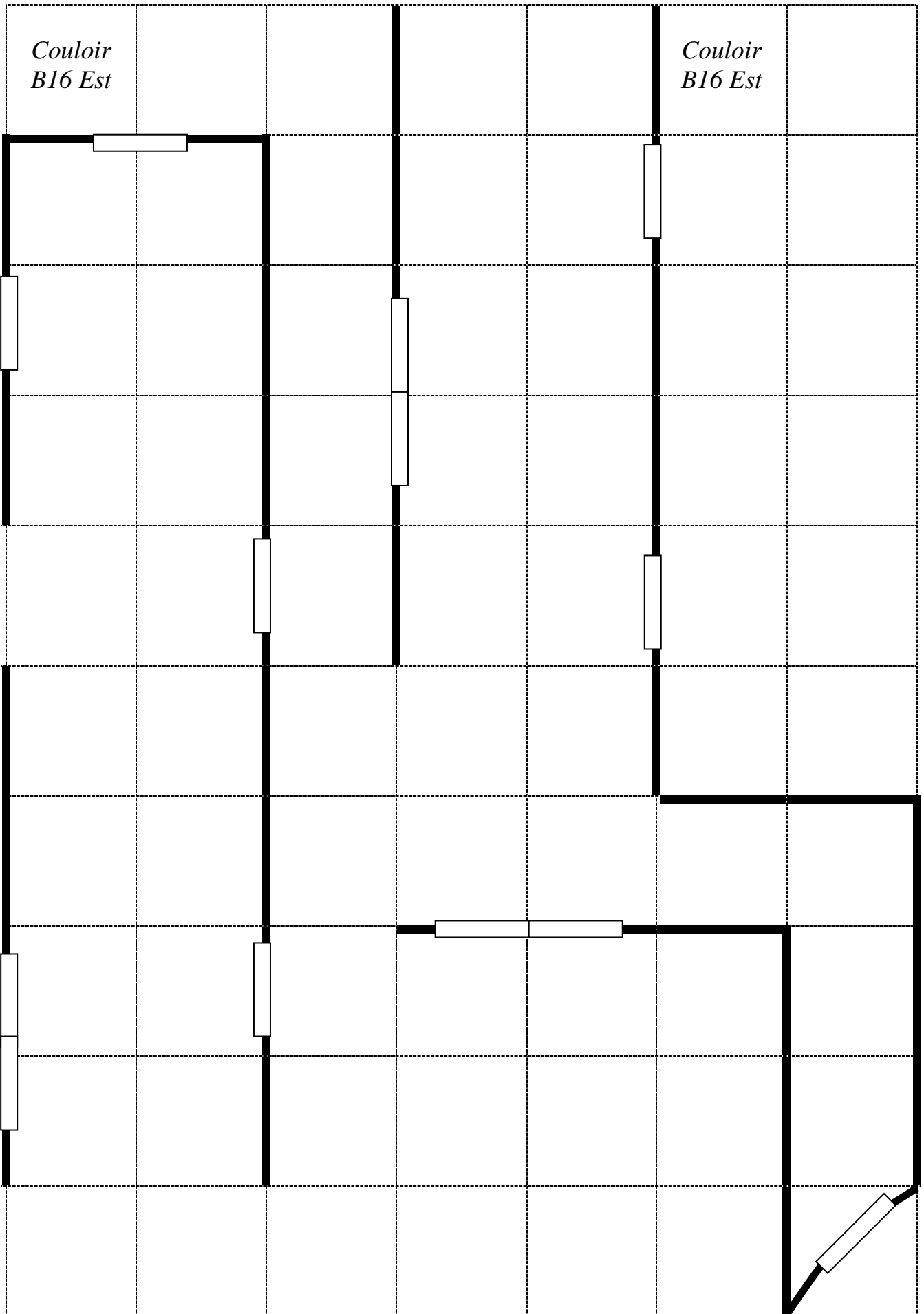
B17 Ouest

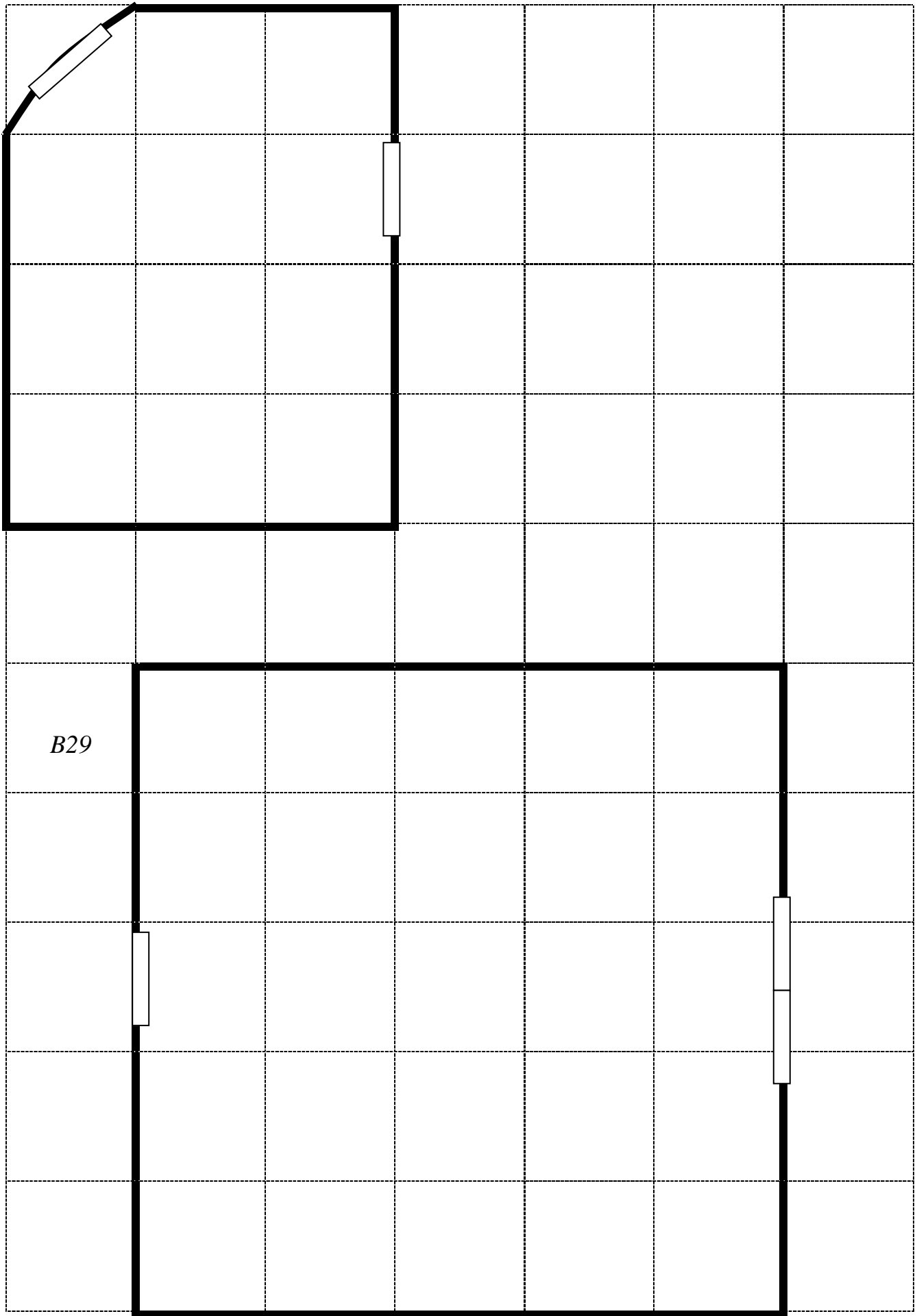
B17 Est

*B27*

*B23*

*Escalier  
Est B16*



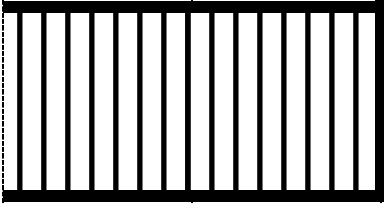


*B29*

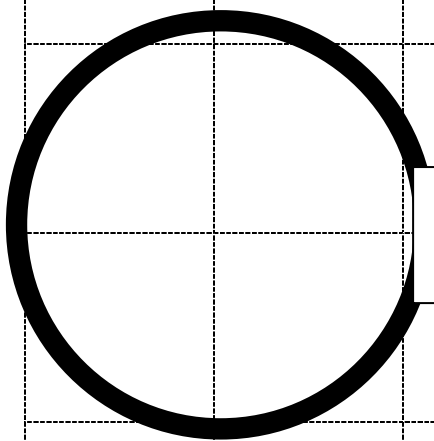
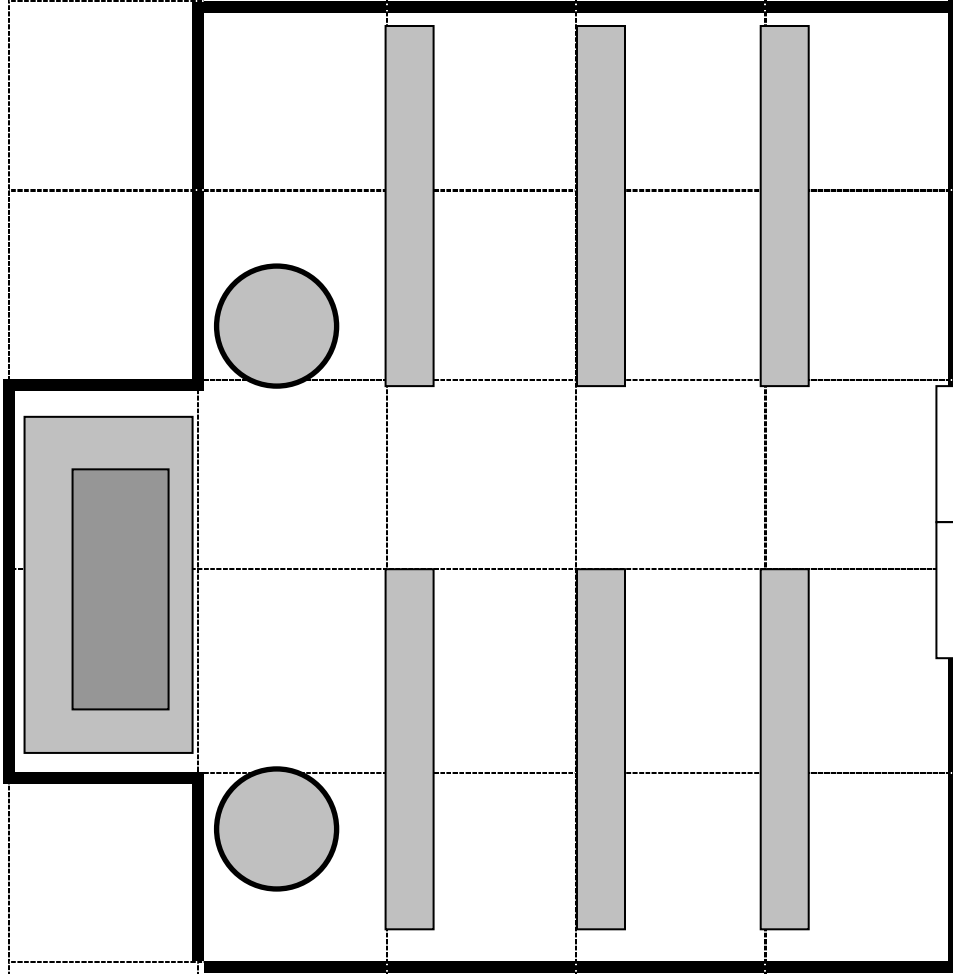


*Fort  
Rannick  
2<sup>e</sup> étage*

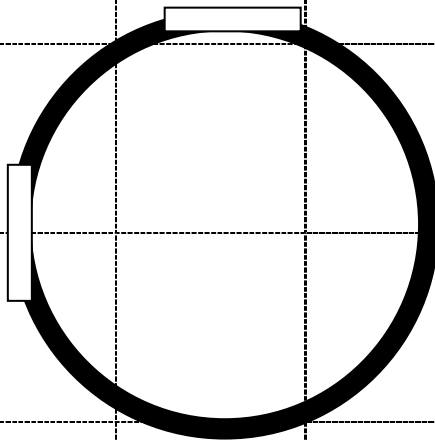
*Escalier  
vers 1er*



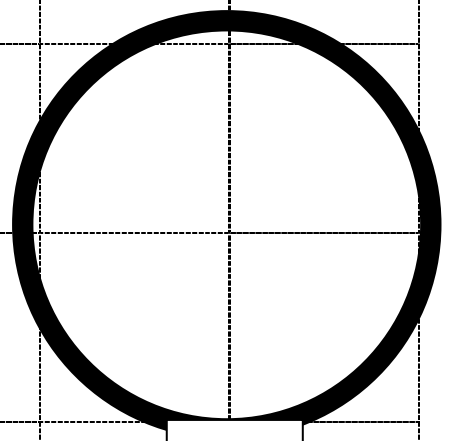
*B29*



*B28 Ouest*

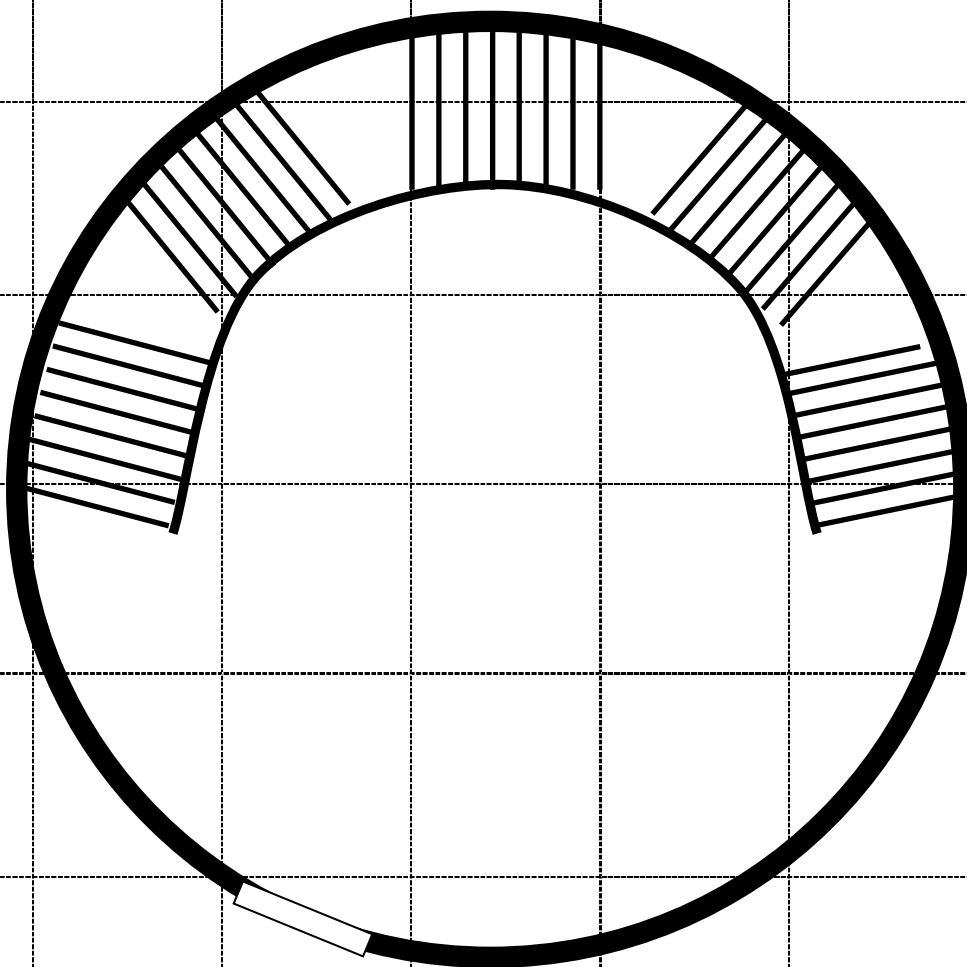


*B28 Est*

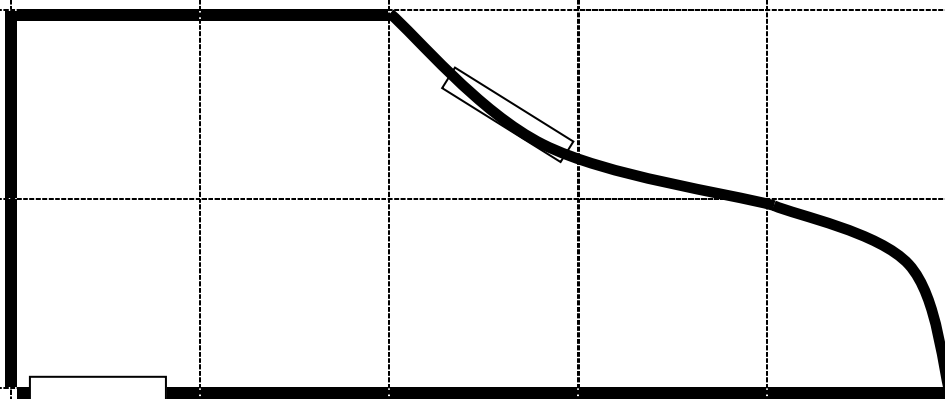


*B28 Nord*

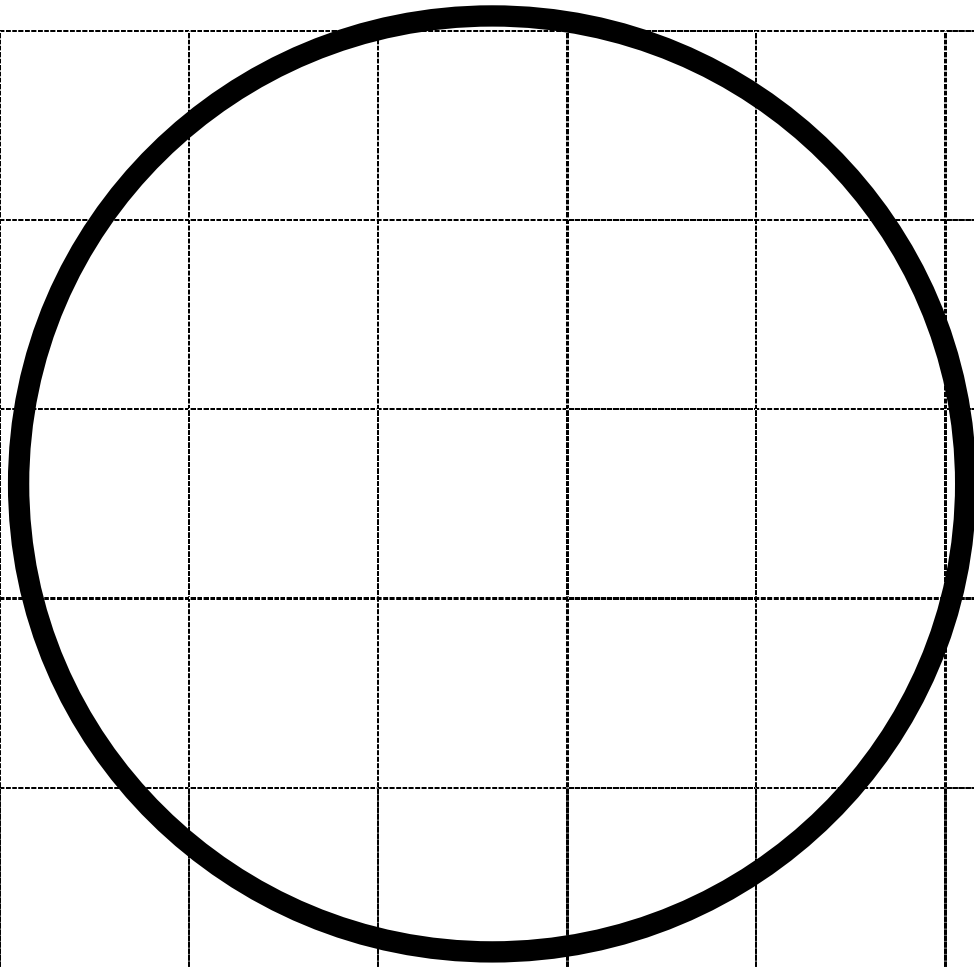
B34



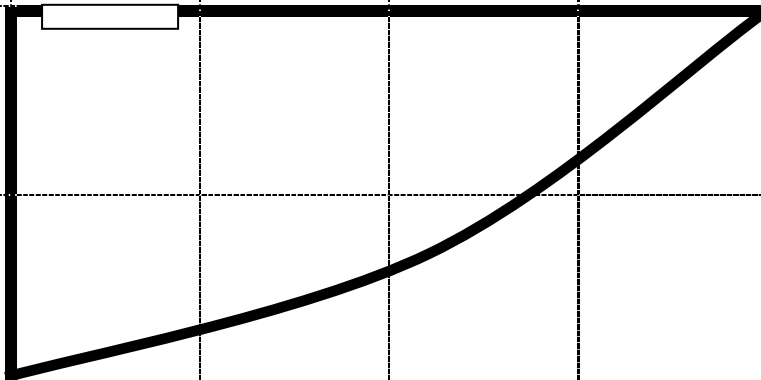
B33



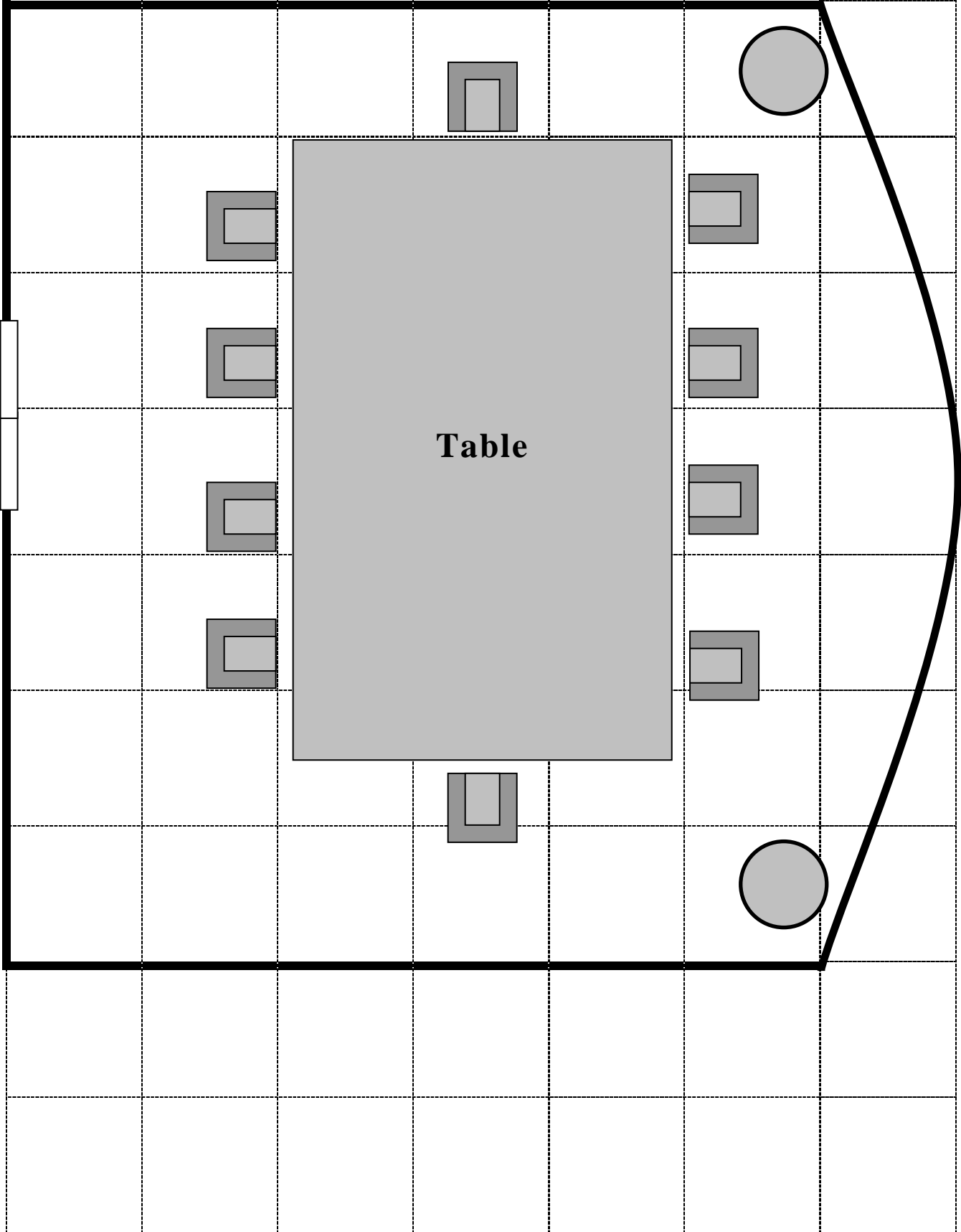
*B35*



*B32*



*B31*



B30

